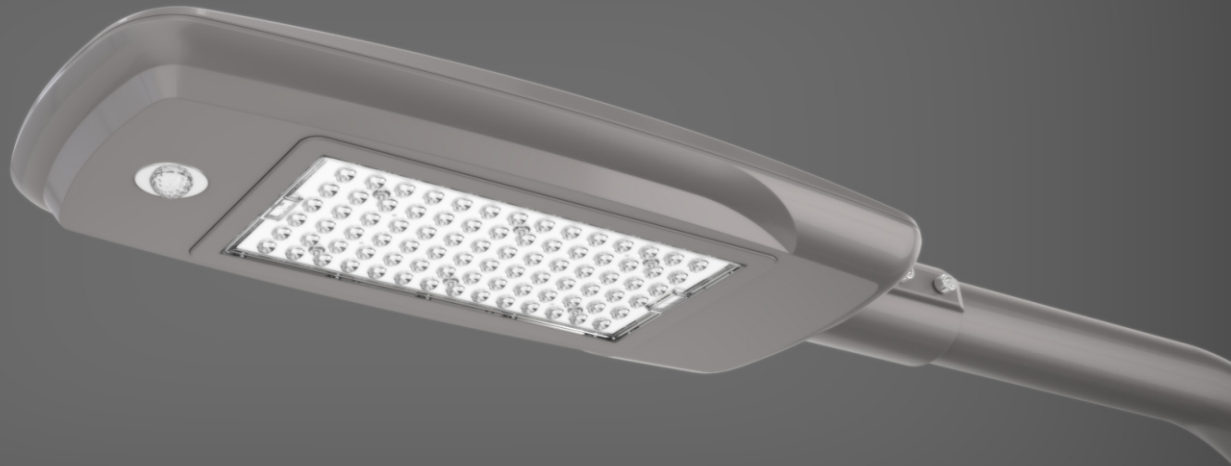


Product Specification



1.Product Introduction



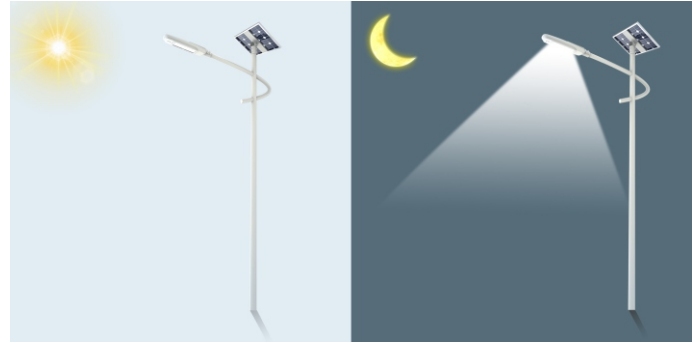
Based on the classic semi-integrated solar street light, this new product is a creative lighting fixture with features of elegant exterior design, die-casting aluminum housing and customized solar panel and functions of time control, light control, human infrared sensing and bluetooth APP control. The direction-adjustable solar panel maximizes the solar cell charging efficiency.

Also it can be matched with AC adaptor and used as a LED street light supplied by commercial electricity with its special controller. And with 5050 LED bead, higher brightness and less energy consumption.

2.Function characteristics



Human Body Induction

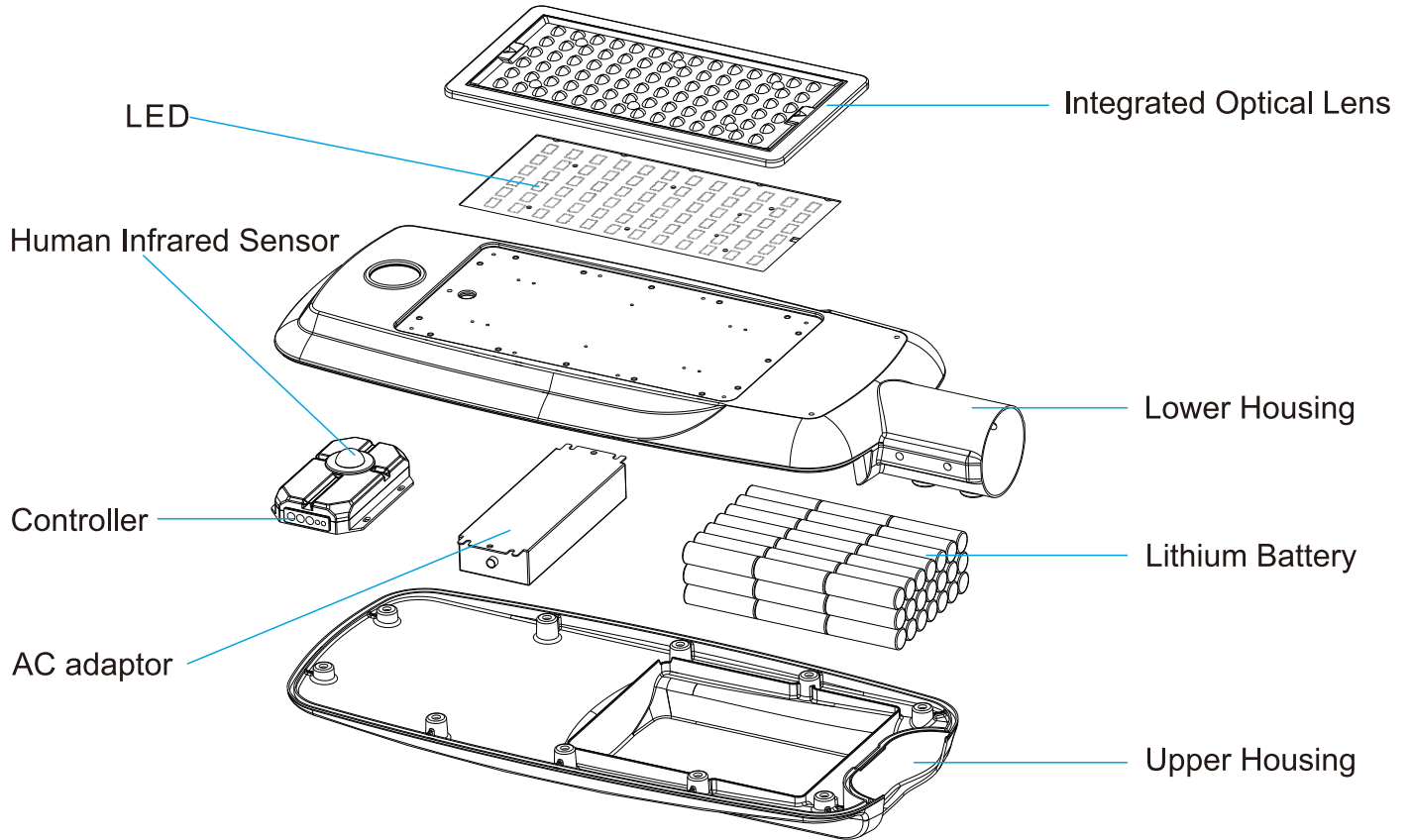


Time Control, Light Control

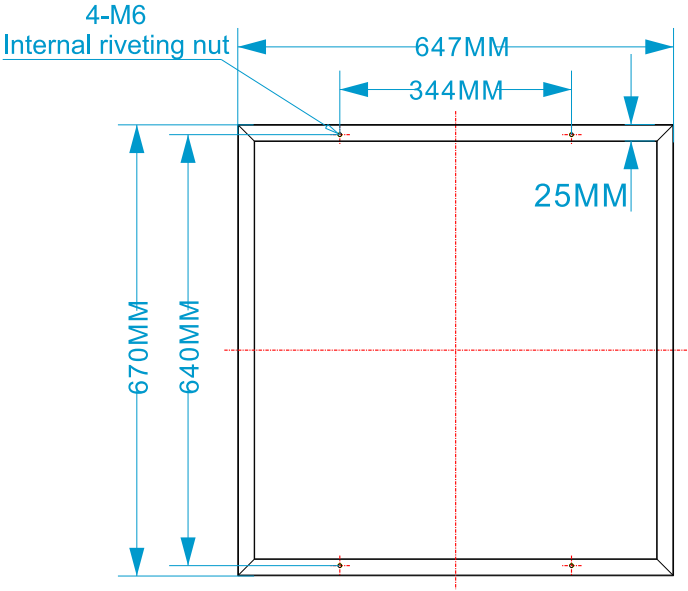


Bluetooth APP Control

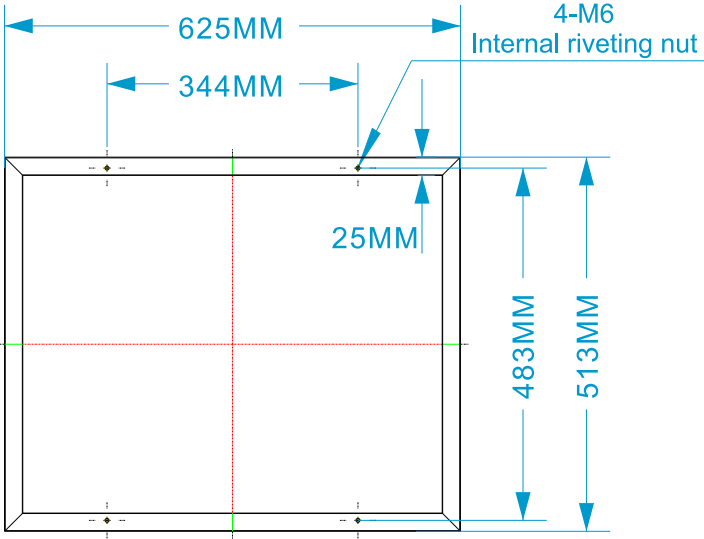
3.Product Structure



4.Solar Panel

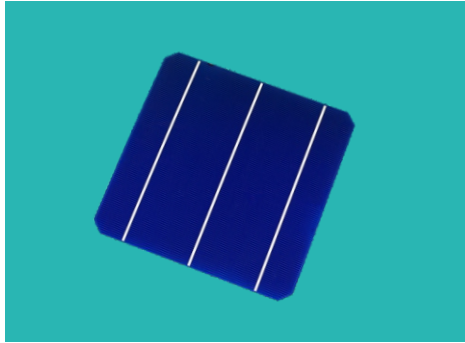


(670x647x30 MM)

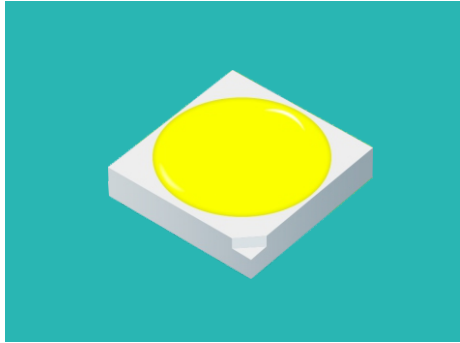


(625x513x30 MM)

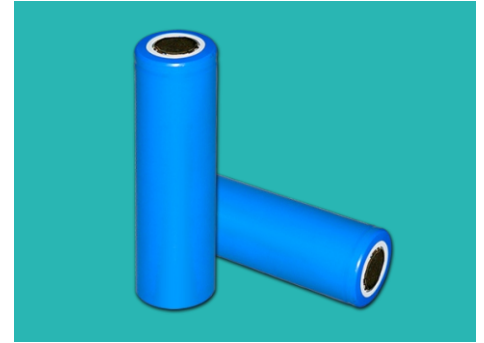
5.Main Components



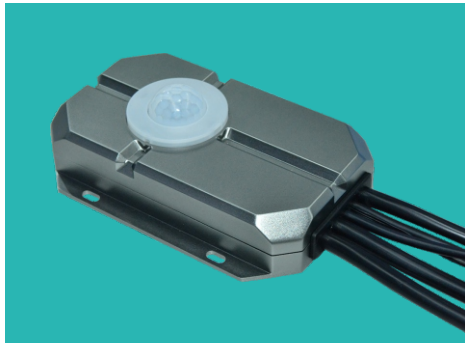
Solar Cell



LED



Battery



Controller



Lens



Die-casting Aluminum Housing

6.Product Parameters/40W

Rated Power :40W

LED :42 pcs

Light Head Size :633x250x90MM

Solar Panel :18V/50W

Lumen Flux :4000-5000LM

Solar Panel Size :625x513x30MM

Lithium Battery :12V/26AH

Luminous Efficiency:130-150LM/W

Installation Height :5-7M

Charging Time :6-8 H

Light Distribution :Batwing Type

Pole Installation Distance:15-21M

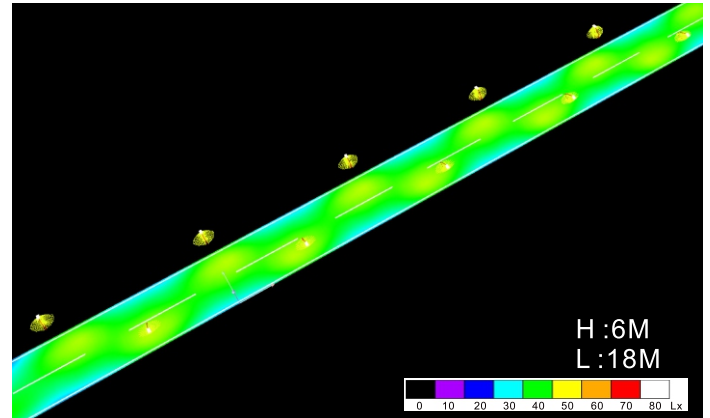
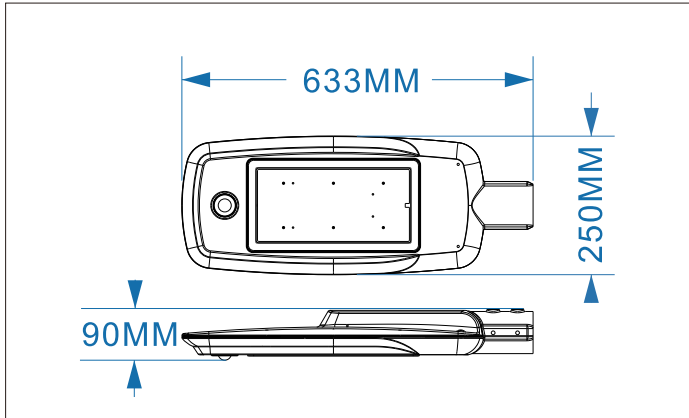
Discharging Time :>36 H

Color Temperature :2800-6500K

Working Temperature :-25°C~+65°C

Switch Threshold :15LUX

Sensing Distance :≤12M



7.Applications

This product is mainly used in traffic road, highway, main street, outdoor parking lot, square and scenic spot etc.

